



SAFEGUARDING ADULTS POLICY AND PROCEDURES

Policy Approved: 02/06/22

Review Date: 02/06/23

Approved by: Phil Davis

Index

1. Introduction
2. Principles
3. How to respond to a concern
4. Commitments
5. Implementation

1. Introduction

Yu! MAC is committed to Safeguarding Adults in line with national legislation and relevant national and local guidelines.

Yu! MAC will safeguard adults by ensuring that our activities are delivered in a way which keeps all adults safe.

Yu! MAC is committed to creating a culture of zero-tolerance of harm to adults which necessitates: the recognition of adults who may be at risk and the circumstances which may increase risk; knowing how adult abuse, exploitation or neglect manifests itself; and being willing to report safeguarding concerns.

Yu! MAC is committed to best safeguarding practice and to uphold the rights of all adults to live a life free from harm from abuse, exploitation and neglect.

2. Principles

Yu! MAC believes everyone has the right to live free from abuse or neglect regardless of age, ability or disability, sex, race, religion, ethnic origin, sexual orientation, marital or gender status.

Yu! MAC is committed to creating and maintaining a safe and positive environment and an open, listening culture where people feel able to share concerns without fear of retribution.

Yu! MAC acknowledges that safeguarding is everybody's responsibility and is committed to prevent abuse and neglect through safeguarding the welfare of all adults involved.

Yu! MAC recognises that health, well-being, ability, disability and need for care and support can affect a person's resilience. We recognise that some people experience barriers, for example, to communication in raising concerns or seeking help. We recognise that these factors can vary at different points in people's lives.

Yu! MAC recognises that there is a legal framework within which sports need to work to safeguard adults who have needs for care and support and for protecting those who are unable to take action to protect themselves and will act in accordance with the relevant safeguarding adult legislation and with local statutory safeguarding procedures.



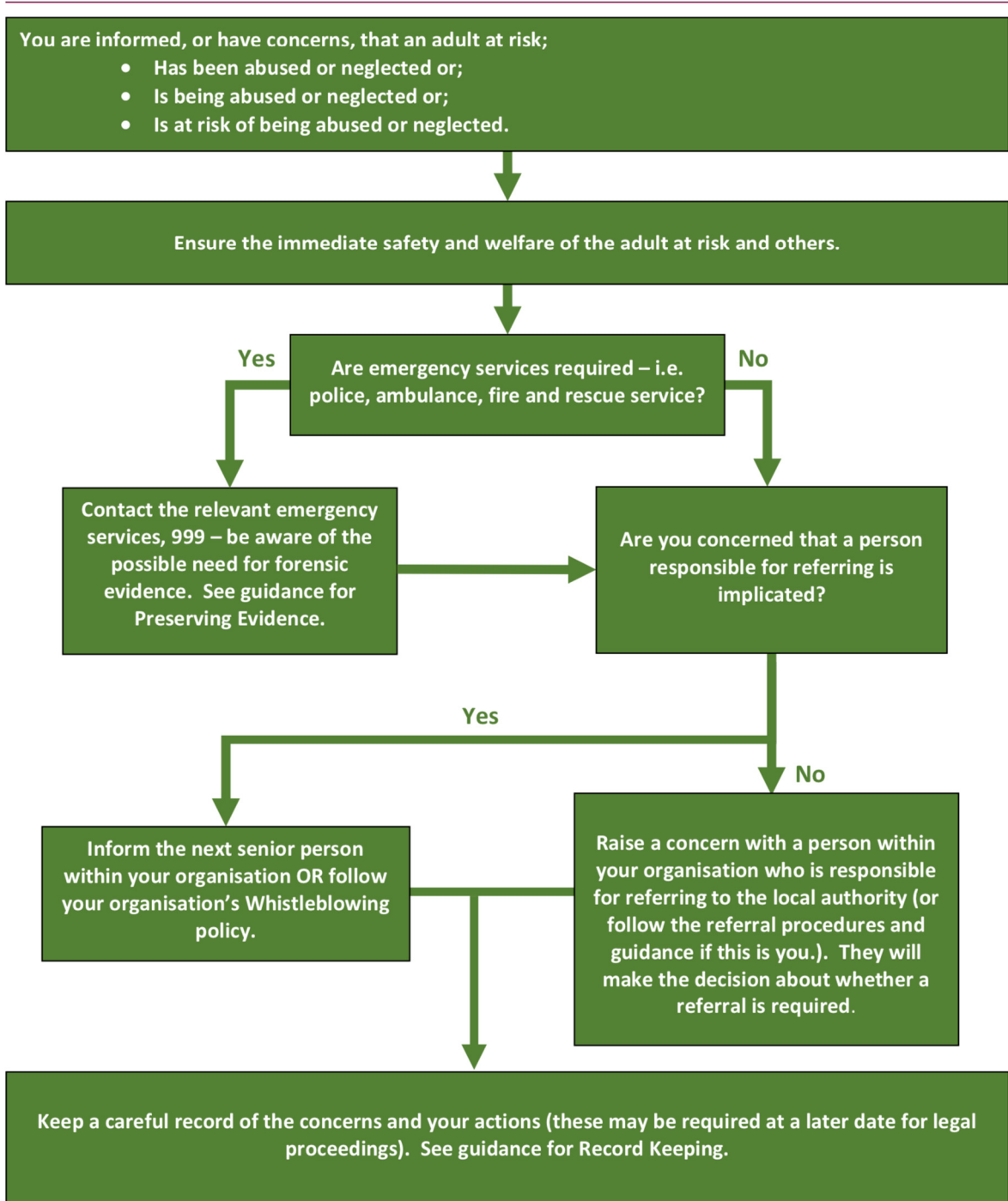
SAFEGUARDING ADULTS POLICY AND PROCEDURES

Actions taken by Yu! MAC will be consistent with the principles of adult safeguarding ensuring that any action taken is prompt, proportionate and that it includes and respects the voice of the adult concerned.

3. How to respond to a concern

The following flow chart has been taken from Nottinghamshire safeguarding adults board and can be also used in conjunction with their policies and procedures for further advice and information.

(<https://www.nottinghamshire.gov.uk/care/safeguarding/mash>)



4. Commitments



SAFEGUARDING ADULTS POLICY AND PROCEDURES

In order to implement this policy Yu! MAC will ensure that:

- Everyone involved with Yu! MAC is aware of the safeguarding adult procedures and knows what to do and who to contact if they have a concern relating to the welfare or wellbeing of an adult.
- Any concern that an adult is not safe is taken seriously, responded to promptly, and followed up in line with Yu! MAC Safeguarding Adults Policy and Procedures.
- The well-being of those at risk of harm will be put first and the adult actively supported to communicate their views and the outcomes they want to achieve. Those views and wishes will be respected and supported unless there are overriding reasons not to (see the Safeguarding Adults Procedures).
- Any actions taken will respect the rights and dignity of all those involved and be proportionate to the risk of harm.
- Confidential, detailed and accurate records of all safeguarding concerns are maintained and securely stored in line with our Data Protection Policy and Procedures.
- Yu! MAC acts in accordance with best practice advice, for example, from UK Sport, Sport England, Sport Wales, Sport Scotland, Sport Northern Ireland, National Governing Bodies, NSPCC, Ann Craft Trust.
- Yu! MAC will cooperate with the Police and the relevant Local Authorities in taking action to safeguard an adult.
- All staff, and volunteers understand their role and responsibility for safeguarding adults and have completed and are up to date with safeguarding adult training and learning opportunities appropriate for their role.
- Yu! MAC uses safe recruitment practices and continually assesses the suitability of volunteers and staff to prevent the employment/deployment of unsuitable individuals in this organisation and within the sporting community.
- Yu! MAC shares information about anyone found to be a risk to adults with the appropriate bodies. For example: Disclosure and Barring Service, Police, Local Authority/Social Services.
- When planning activities and events Yu! MAC includes an assessment of, and risk to, the safety of all adults from abuse and neglect and designates a person who will be in attendance as a safeguarding lead for that event. **In the absence of the Clubs designated safeguarding lead this will be the head coach at the event.**
- Actions taken under this policy are reviewed by the senior management team on an annual basis.
- This policy, related policies (see below) and the Safeguarding Adults Procedures are reviewed no less than on a two yearly basis and whenever there are changes in relevant legislation and/or government guidance as required by the Local Safeguarding Board, UK Sport, Sport England/Wales/Scotland/Northern Ireland and/or National Governing Bodies or as a result of any other significant change or event.

5. Implementation



SAFEGUARDING ADULTS POLICY AND PROCEDURES

Yu! MAC is committed to developing and maintaining its capability to implement this policy and procedures.

In order to do so the following will be in place:

- A clear line of accountability within the organisation for the safety and welfare of all adults.
 - Access to relevant legal and professional advice.
 - Safeguarding adult procedures that deal effectively with any concerns of abuse or neglect, including those caused through poor practice.
 - A Safeguarding Lead
 - A delegated Safeguarding Lead/Welfare Officer for events/trips/competitions.
 - Codes of conduct for Staff, Coaches, Volunteers and Members and other relevant individuals that specify zero tolerance of abuse in any form.
 - Risk assessments that specifically include safeguarding of adults.
 - Policies and procedures that address the following areas and which are consistent with this Safeguarding Adults policy.
- equality policy
 - complaints procedures
 - disciplinary procedures
 - health and safety policy
 - Safeguarding children Policy

